

2025 Fall Series – Waukegan Yacht Club

NOTICE OF RACES & SAILING INSTRUCTIONS

This document is a Fall Series subsection summary of **2025 NOTICE OF RACES & SAILING INSTRUCTIONS** previously published, corrected, and amended for convenience of competitors.

DATES & SOCIAL EVENTS

Fall Series begins Saturday, October 4th and ends Saturday, October 18th.

Each Saturday in the series is its own regatta event

October 4 – Fall Series Warm Up

October 11 – **Chowda Cup Invitational**

Post Race Social & Chowder Contest

October 18 – **Mayor's Cup Invitational**

Post Race Dinner & Chili Cook Off

ELIGIBILITY

Sailing vessels with MWPHRF certificates and one-design dinghies of all types able to launch from Waukegan Marina are eligible to register. US Sailing Registration is encouraged but is not required for the dinghy racing sections of the Fall events.

INVITATIONAL event notices will be shared and posted with regional fleets for Buccaneers, Lasers (ILCA), and Penguins, and is open to other interested fleets.

A limited number of Penguin dinghies are available for loan at the WYC. If races are held in the PW race area in loaned boats, the event may be designated by the Race Committee as “round robin” to promote fun and fair competition.

ENTRIES

Sailing yachts are required to complete the registration, provide proof of insurance, provide a current PHRF certificate, and pay the racing fee.

Sailing dinghies are required to complete the registration and pay the racing fee.

- The [registration link](#) ➔ Enter your Email in the field on the linked page and click NEXT
- The [racing fee link](#)

A one-design dinghy fleet will automatically be created if at least 3 competitors have registered, otherwise competitors will be assigned to a mixed dinghy fleet.

Please do not contact the sail chair to ask if your fleet can be included – simply register.

FEES

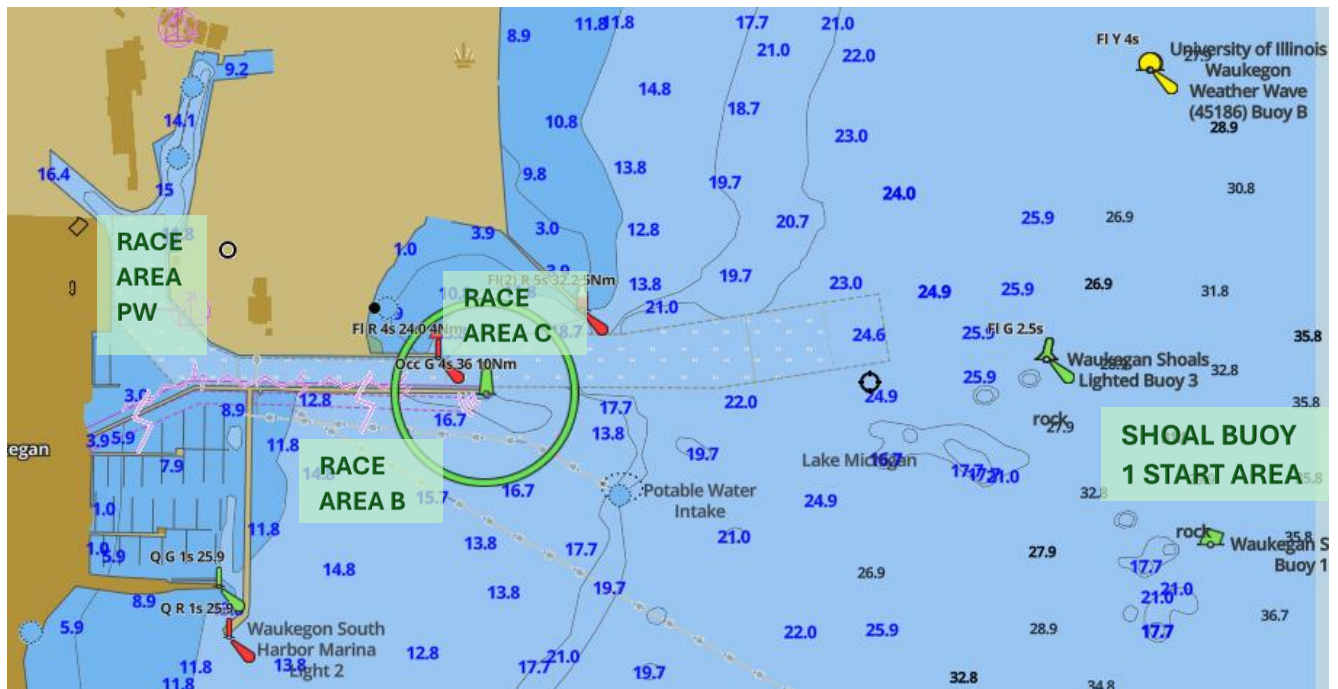
Fees for the Fall Series are \$35 per event per sailing vessel

SECTION BREAKS & DINGHY FLEETS

Yacht racing MWPHRF section breaks will be announced by RC on Channel 69 and posted in The Porthole News prior to the first warning.

One-design sections will be established for any fleet with 3 or more competitors. Fleets with less than 5 competitors may run a combined start with another one-design fleet.

IF conditions offshore are such that general yacht racing must be postponed or abandoned, dinghy racing may proceed in semi-protected race area B or C or in the protected waters of race area PW (Harbor at the Port of Waukegan)



RULES

All races will be governed by the 2025-2028 Racing Rules of Sailing. You can find a complete copy of the Racing Rules of Sailing at the following URL: <https://www.racingrulesofsailing.org/>

MWPHRF prescriptions apply for yacht races

One-design class prescriptions apply for dinghy races and one-design yacht racing fleets. Crew limitations are prescribed by each one-design class.

Waukegan Yacht Club (WYC) recommends wearing Personal Floatation Devices (PFD's) during all races.

If the "Wear PFD" flag is flown, every competitor must wear their PFD.

SCHEDULE

Fall Series 1 & 2	
Day of Week	Saturday
2025 Date	10/4/2025
Start Time	1st Warning 0955 hrs, 1st Start 1000 hrs
Starting Line	Shoal Buoy #1
Course	Established by WYC Committee Boat
Distance	TBD
Time Limit	From the start, one hour to round the first mark and 2.5 hours to finish

Fall Series 3 & 4 – The Chowda Cup	
Day of Week	Saturday
2025 Date	10/11/2025
Start Time	1st Warning 0955 hrs, 1st Start 1000 hrs. No warning signal will be made after 2:30 PM
Starting Line	Shoal Buoy #1 or Alternate Start Mark set by WYC Committee Boat
Course	Established by WYC Committee Boat
Distance	TBD
Time Limit	From the start, one hour to round the first mark and 2.5 hours to finish

Fall Series 5 & 6 – the Mayor's Cup	
Day of Week	Saturday
2025 Date	10/18/2025
Start Time	1st Warning 0955 hrs, 1st Start 1000 hrs. No warning signal will be made after 3:30 PM
Starting Line	Shoal Buoy #1 or Alternate Start Mark set by WYC Committee Boat
Course	Established by WYC Committee Boat
Distance	TBD
Time Limit	From the start, one hour to round the first mark and 2.5 hours to finish

COMMUNICATIONS & NOTICES:

Notices to competitors (if any) will be posted on the WYC bulletin board and/or announced on VHF channel 69 prior to the start of the days racing.

CHANGES: Any change in the sailing instructions will be posted on the WYC web site at least 24 hours before the day that they will take effect. Oral changes may also be made prior to the start of the race if deemed advisable and necessary following the hoisting of the Code Flag “L”.

COURSES: No later than the warning signal the race committee signal boat will display the approximate compass bearing to the first leg and the number of legs.

After the warning signal for the first start, all boats that are not starting are required to stay outside the starting area, so as not to interfere with boats that are starting. The starting area is defined as an area extending one half the length of the starting line at both sides of the starting line and extending one half the length of the starting line beyond each end of the starting line.

The “I” flag rule is always in effect, even if the flag is not flown by the committee boat. Any yacht that is on the course side of the starting line less than one (1) prior minute to their start must clear themselves by sailing around the ends of the starting line. Violators are subject to protest by the committee boat and racers.

SECTION FLAGS: MWPHRF yachts must display their section flag secured to the permanent backstay or stern pulpit if no backstay exists. Yachts not displaying their PHRF section flag are subject to protest by the race committee or other competitors. Boats participating in a one-design start section is not required to display a section flag.

IDENTIFICATION - CHECK IN: Racing yachts shall check in by hailing the committee boat prior to the start of the race and at the finish. It is the responsibility of each skipper to make sure that his/her boat is properly identified. To prevent unnecessary traffic in the starting area, a racer who arrives at the starting area at 0955 (9:55 AM) or later, must postpone their check-in until the boat’s section starting sequence commences. Additionally, if a racer does not check in, they will not get scored and instead receive a Did-Not-Compete (DNC).

The VHF radio is not an acceptable means of checking in.

RADIO: General use of the radio (channel 69) is considered a courtesy and designated for use by the Race Committee only, except for the following:

- Notification of an emergency or danger
- Notification of withdrawal from the race
- Notification of filing a protest
- Notification of acceptance of alternate penalty
- Response to a specific committee boat request directed to your boat or to the

THE FINISH: The finish line is the invisible line (vertical plane) between the Race Committee boat’s flag and the finish mark. Leave committee boat to starboard and finish mark to port unless instructed otherwise.

ALTERNATE PENALTIES: A yacht that realizes that she has infringed a rule shall either retire promptly or accept an alternate penalty. A boat may clear itself with one turn (Touching a Mark) or two turns (When Boats Meet) penalty after getting clear of other boats as soon after the incident as

possible. If the boat caused injury or serious damage or gained a significant advantage in the race or series by her breach her penalty shall be to retire.

PROTESTS: The protester must (at the first reasonable opportunity):

1. Hail the skipper being protested immediately
2. Fly a red (protest) flag
3. Notify the race committee boat of the pending protest.

Protests shall be written on an official protest form and given within one hour after the committee boat docks to the race committee. If the hearing cannot be held on the same day, the hearing will be scheduled no later than 8 days after the incident. Race results will be re-scored, as necessary, based on decisions of the protest committee.

SCORING: The low point scoring system will be used. 1 point for first, 2 points for second, 3 points for third, etc.

Completion of 1 race per Saturday event will constitute a regatta event and completion of 2 races in the Fall Series (1-6) will constitute a series.

For each regatta event a boat's score shall be the total of her race scores.

For the Fall Series a competitor's score will be the total of the Best 4 of his/her race scores (competitors switching to dinghy racing fleets shall be eligible to combine yachting and dinghy scores). When fewer than 4 races have been completed a competitor's series score will be the total of his/her race scores.

A DSQ can't be thrown out if it was the result of a collision, which caused injury or damage.

LOANED PENGUIN DINGHY: A loaned boat may carry a sail number in contravention of her class rules, provided that the race committee has approved her sail identification before the first race. See RRS G3.

RISK STATEMENT: RRS 3 states: 'The responsibility for a boat's decision to participate in a race or to continue to race is hers alone.' By participating in this event each competitor agrees and acknowledges that sailing is a potentially dangerous activity with inherent risks. These risks include strong winds and rough seas, sudden changes in weather, failure of equipment, boat handling errors, poor seamanship by other boats, loss of balance on an unstable platform and fatigue resulting in increased risk of injury. Inherent in the sport of sailing is the risk of permanent, catastrophic injury or death by drowning, trauma, hypothermia or other causes.

INSURANCE: Each participating boat shall be insured with valid third-party liability insurance.

PRIZES: Prizes will be given as follows: Fall Series flag at annual awards event. Mayor's Cup overall winners will be engraved on the perpetual trophy in the case at WYC.

FURTHER INFORMATION: For further information please contact sail@waukeganyachtclub.org